

HIGHLIFE® COLLECTION

PRODIGY™



FreshWater® IQ
System Ready



100% Filtration
SilentFlo Circulation



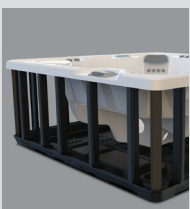
Moto-Massage® DX



Super Energy
Efficient



Colour LCD
Touchscreen



Polymer
Substructure & Base
Pan



Salt
System
Included
freshwater®



Shown with Alpine White Shell
and Java Cabinet

People	Seating	Jets	Voltage
5 Seats	Open	28 Jets	230 V

Size
213 × 198 × 84 cm

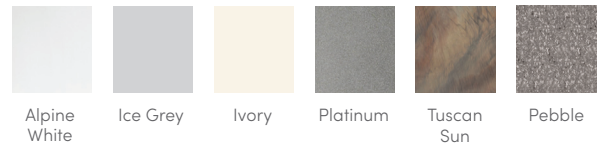
Water Care
FreshWater® Salt System Included

HIGHLIFE® COLLECTION

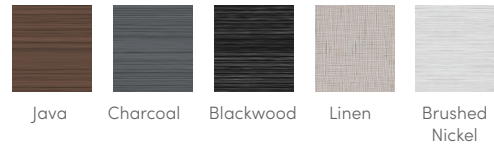
PRODIGY™



SHELL COLOURS



CABINET COLOURS



COVER COLOURS



CABINET AND SHELL COLOUR OPTIONS*

Cabinet Colours	Java	Charcoal	Blackwood	Linen	Brushed Nickel
Shell Colours	Alpine White Ice Grey Ivory Tuscan Sun Pebble	Alpine White Ice Grey Platinum Tuscan Sun Pebble	Alpine White Ice Grey Platinum	Alpine White Ivory Tuscan Sun Pebble	Alpine White Ice Grey Platinum

LEGENDARY MASSAGE

- 28 Personalised-Control Jets**
- Moto-Massage® Seat
 - Soothing Stream™ Seat
 - Precision™ Jet Seat
 - Hydromassage Seat

EASY WATER CARE

- Water Care System**
- FreshWater® IQ Ready
 - + Salt System Included
 - + Smart Monitoring System Optional
 - + Dosing System Optional

- Filtration System**
- 100% No-bypass Filtration, Exclusive, High-flow Tri-X™ Filters

LEADING ENERGY EFFICIENCY

- Jet Pump**
- WaveMaster® 9200; Two-speed, 2.5 HP Continuous Duty, 5.2 HP Breakdown Torque
- Circulation Pump**
- SilentFlo 5000™ for quiet, continuous filtration
- Heater**
- No-Fault® 1,500 W / 230 V
- Insulation**
- Multiple Layers of Foam Insulation; Certified to California Energy Commission (CEC) and APSP 14 energy efficiency standards for portable spas

- Cover**
- WeatherPro™ 10 cm Tapered Custom-Fit with Hinge Seal

SIZE

- Dimensions**
- 213 × 198 × 84 cm

CAPACITY

- Seating Capacity**
- 5 seats
- Water Capacity**
- 1,025 litres
- Weight**
- 260 kg dry; 1,685 kg filled**

ADDITIONAL FEATURES

- Smart Spa Technology**
- Hot Spring Spas App
- Water Feature**
- BellaFontana™ with 3 illuminated arcs of water
- Cover Lifters**
- CoverCradle™, CoverCradle II, or Lift 'n Glide™
- Steps**
- Steps are available to match cabinet colours
- Entertainment**
- Wireless Sound System (Optional)
- Control System**
- IQ 2020™ with Colour LCD Touchscreen, 230 V / 16 amp, 50 Hz
- Lighting System**
- Luminescence™ multi-colour four-zone

*No special orders or shell substitutions available. Actual colours and products may vary from print representation. See dealer to verify.
**Includes water and 5 adults weighing 80 kg each.