

HIGHLIFE® COLLECTION

JETSETTER™ LX



FreshWater® IQ System Ready



100% Filtration SilentFlo Circulation



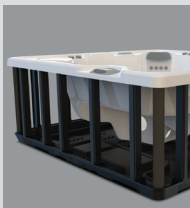
Moto-Massage® DX



Super Energy Efficient



Colour LCD Touchscreen



Polymer Substructure & Base Pan



Salt System Included
freshwater®



Shown with Alpine White Shell and Charcoal Cabinet

People	Seating	Jets	Voltage
3 Seats	Lounge	30 Jets	230 V

Size
213 × 173 × 84 cm

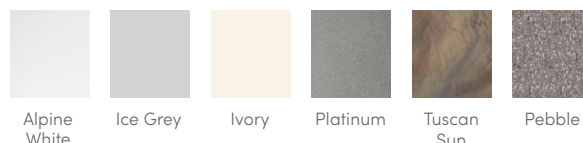
Water Care
FreshWater® Salt System Included

HIGHLIFE® COLLECTION

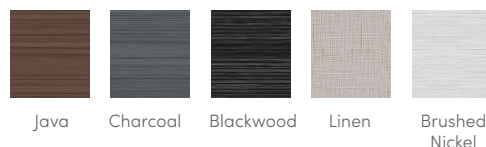
JETSETTER™ LX



SHELL COLOURS



CABINET COLOURS



COVER COLOURS



CABINET AND SHELL COLOUR OPTIONS*

Cabinet Colours	Java	Charcoal	Blackwood	Linen	Brushed Nickel
Shell Colours	Alpine White Ice Grey Ivory Tuscan Sun Pebble	Alpine White Ice Grey Platinum Tuscan Sun Pebble	Alpine White Ice Grey Platinum	Alpine White Ivory Tuscan Sun Pebble	Alpine White Ice Grey Platinum

LEGENDARY MASSAGE

- 30 Personalised-Control Jets**
- Moto-Massage® Lounge
 - Soothing Stream™ Seat
 - Precision™ Jet Seat

EASY WATER CARE

- Water Care System**
- FreshWater® IQ Ready
 - + Salt System Included
 - + Smart Monitoring System Optional
 - + Dosing System Optional
- Filtration System**
- 100% No-bypass Filtration, Exclusive, High-flow Tri-X® Filters

LEADING ENERGY EFFICIENCY

- Jet Pump**
- WaveMaster® 9000; One-speed, 2.5 HP Continuous Duty, 5.2 HP Breakdown Torque
- Circulation Pump**
- SilentFlo 5000™ for quiet, continuous filtration
- Heater**
- No-Fault® 1,500 W / 230 V
- Insulation**
- Multiple Layers of Foam Insulation; Certified to California Energy Commission (CEC) and APSP 14 energy efficiency standards for portable spas

Cover

- WeatherPro™ 10 cm Tapered Custom-Fit with Hinge Seal

SIZE

Dimensions

- 213 × 173 × 84 cm

CAPACITY

Seating Capacity

- 3 seats with lounge

Water Capacity

- 950 litres

Weight

- 235 kg dry; 1,425 kg filled**

ADDITIONAL FEATURES

- Smart Spa Technology**
- Hot Spring Spas App
- Cover Lifters**
- CoverCradle™, CoverCradle II, Lift 'n Glide™, or UpRite™ (F/B only)
- Steps**
- Steps are available to match cabinet colours
- Entertainment**
- Wireless Sound System (Optional)
- Control System**
- IQ 2020™ with Colour LCD Touchscreen, 230 V / 16 amp, 50 Hz
- Lighting System**
- Luminescence™ multi-colour four-zone

*No special orders or shell substitutions available. Actual colours and products may vary from print representation. See dealer to verify.
**Includes water and 3 adults weighing 80 kg each.