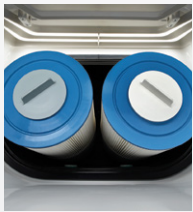


LIMELIGHT® COLLECTION

PRISM™



FreshWater® IQ System Ready



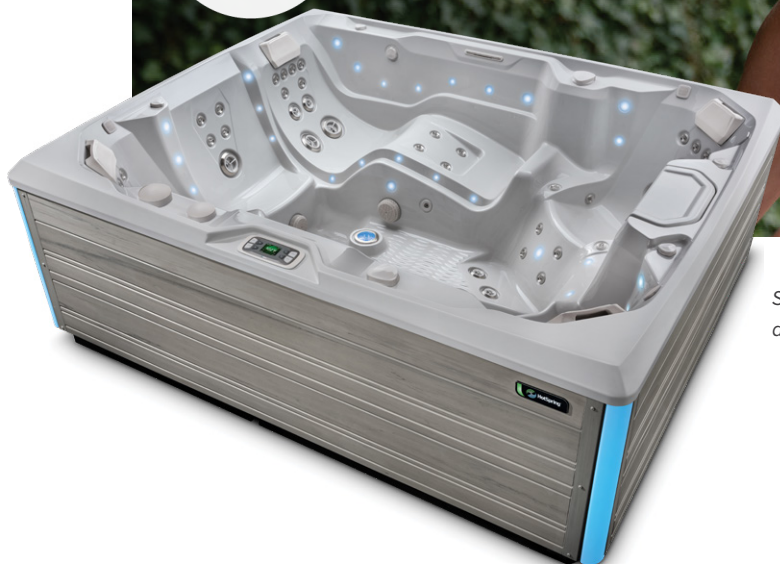
Dual Action Filtration
SilentFlo Circulation



FiberCor®
High-Density Insulation



Colour LCD Display



*Shown with Ice Grey Shell
and Coastal Grey Cabinet*

People	Seating	Jets	Voltage
7 Seats	Lounge	73 Jets	230 V

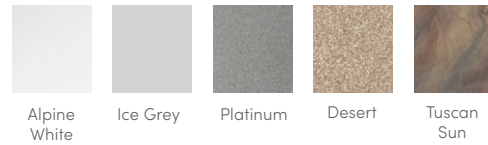
279 × 231 × 97 cm

Water Care
FreshWater® Salt System Ready

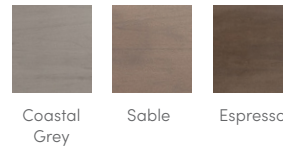
PRISM™



SHELL COLOURS*



CABINET COLOURS*



COVER COLOURS

POLYESTER



Storm

LEGENDARY MASSAGE

73 Personalised-Control Jets

- 1 FootStream™ XL
- 1 XL Dual Rotary jet
- 2 XL Single Rotary jets
- XL Directional Jet
- 7 Standard Dual Rotary jets
- 4 Standard Single Rotary jets
- 4 Standard Directional jets
- 10 Rotary Precision jets
- 41 Directional Precision® jets

EASY WATER CARE

Water Care System

FreshWater® Salt System Ready, Smart Monitoring System Optional

Filtration System

Dual action, 13.9 m², top loading

LEADING ENERGY EFFICIENCY

Jet Pump 1

WaveMaster® 9200; Two-speed, 2.5 HP Continuous Duty, 5.2 HP Breakdown Torque

Jet Pump 2

WaveMaster 9000; One-speed, 2.5 HP Continuous Duty, 5.2 HP Breakdown Torque

Jet Pump 3

WaveMaster 9000; One-speed, 2.5 HP Continuous Duty, 5.2 HP Breakdown Torque

Circulation Pump

SilentFlo 5000™ for quiet, continuous filtration

Heater

No-Fault® 1,500 W / 230 V

Insulation

FiberCor® Insulation; Certified to California's Energy Commission (CEC) and APSP 14 energy efficiency standards for portable spas

Cover

WeatherPro™ 10 cm Tapered Custom-Fit with Hinge Seal

SIZE

Dimensions

279 × 231 × 97 cm

CAPACITY

Seating Capacity

7 seats

Water Capacity

1,990 litres

Weight

540 kg dry; 3,085 kg filled**

ADDITIONAL FEATURES

Smart Spa Technology

Hot Spring Spas App, Powered by the Connected Spa Kit

Water Feature

Vidro™ backlit ribbon waterfall

Cover Lifters

CoverCradle™ or UpRite™

Steps

Limelight Collection Step (Coastal Grey, Espresso, and Sable), Polymer Step (Ash)

Entertainment

Bluetooth™ Wireless Sound System (Optional)

Control System

IQ 2020™ with LCD control panel 230 V / 16 + 25 amp, 50 Hz

Lighting System

Raio™ multi-colour interior points of light
Exterior multi-colour lighting with timer