



FreshWater® IQ System Ready



100% Filtration SilentFlo Circulation



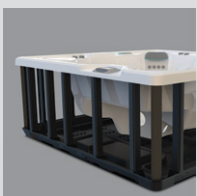
Moto-Massage® DX



Super Energy Efficient



Colour LCD Touchscreen



Polymer Substructure & Base Pan

HIGHLIFE® COLLECTION

# VANGUARD™



Salt System Included  
freshwater™

Shown with Alpine White Shell and Blackwood Cabinet

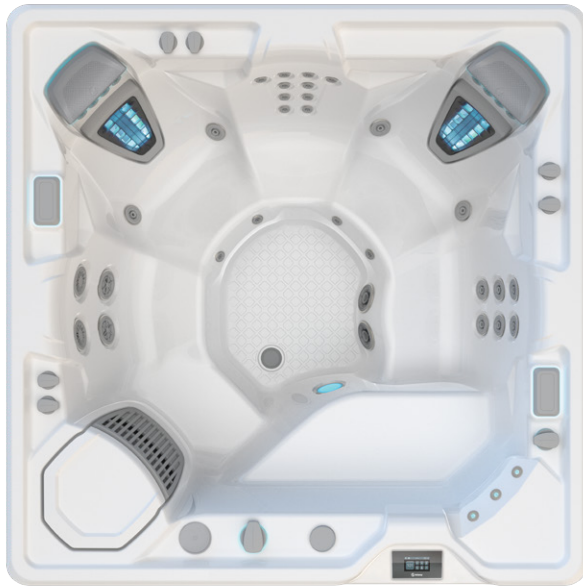
<b>People</b>	<b>Seating</b>	<b>Jets</b>	<b>Voltage</b>
6 Seats	Open	42 Jets	230 V

**Size**  
221 × 221 × 91 cm

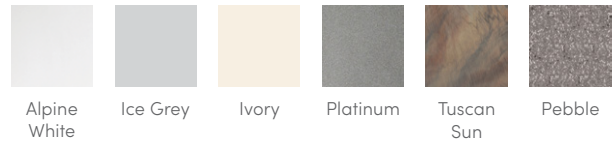
**Water Care**  
FreshWater® Salt System Included

# HIGHLIFE® COLLECTION

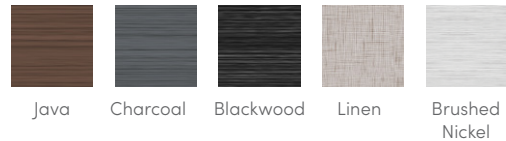
# VANGUARD™



## SHELL COLOURS



## CABINET COLOURS



## COVER COLOURS

POLYESTER



## CABINET AND SHELL COLOUR OPTIONS\*

Cabinet Colours	Java	Charcoal	Blackwood	Linen	Brushed Nickel
Shell Colours	Alpine White Ice Grey Ivory Tuscan Sun Pebble	Alpine White Ice Grey Platinum Tuscan Sun Pebble	Alpine White Ice Grey Platinum	Alpine White Ivory Tuscan Sun Pebble	Alpine White Ice Grey Platinum

## LEGENDARY MESSAGE

### 42 Personalised-Control Jets

- 2 Moto-Massage® Seats
- Soothing Stream™ Seat
- Precision™ Jet Seat
- HydroStream™ Seat

## EASY WATER CARE

### Water Care System

FreshWater® Salt System Included, Smart Monitoring System Optional

### Filtration System

100% No-bypass Filtration, Exclusive, High-flow Tri-X® Filters, 30 m² Filtration Area

## LEADING ENERGY EFFICIENCY

### Jet Pump 1

WaveMaster® 9000; One-speed, 2.5 HP Continuous Duty, 5.2 HP Breakdown Torque

### Jet Pump 2

WaveMaster 9200; Two-speed, 2.5 HP Continuous Duty, 5.2 HP Breakdown Torque

### Circulation Pump

SilentFlo 5000™ for quiet, continuous filtration

### Heater

No-Fault® 1,500 W / 230 V

### Insulation

Multiple Layers of Foam Insulation; Certified to California Energy Commission (CEC) and APSP 14 energy efficiency standards for portable spas

### Cover

WeatherPro™ 10 cm Tapered Custom-Fit with Hinge Seal

## SIZE

### Dimensions

221 × 221 × 91 cm

## CAPACITY

### Seating Capacity

6 seats

### Water Capacity

1,425 litres

### Weight

320 kg dry; 2,225 kg filled\*\*

## ADDITIONAL FEATURES

### Smart Spa Technology

Hot Spring Spas App, Powered by the Connected Spa Kit

### Water Feature

BellaFontana™ with 3 illuminated arcs of water

### Cover Lifters

CoverCradle™, CoverCradle II, Lift 'n Glide™, or UpRite™

### Steps

Steps are available to match cabinet colours

### Entertainment

Bluetooth® Wireless Sound System (Optional)

### Control System

IQ 2020™ with Colour LCD Touchscreen, 230 V / 20 amp, 50 Hz

### Lighting System

Luminescence™ multi-colour four-zone

### Cooling System

CoolZone™ (Optional)

\*No special orders or shell substitutions available. Actual colours and products may vary from print representation. See dealer to verify.

\*\*Includes water and 6 adults weighing 80 kg each.